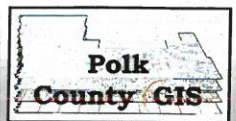
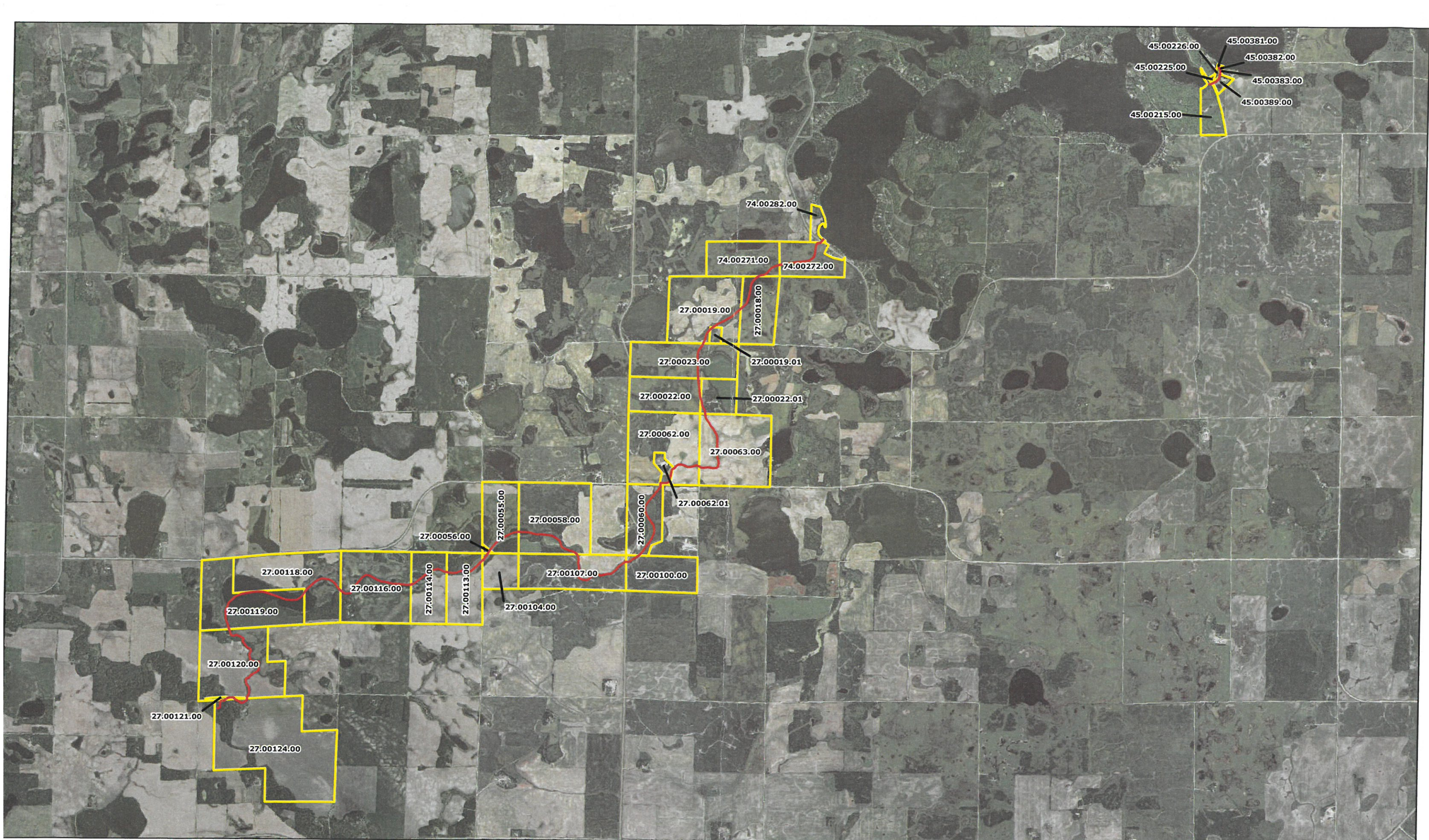


Union Lake Outlet Route
(Approximated from LiDAR Data)

— Outlet Route □ Outlet Route Parcels

These data are provided on an "AS-IS" basis, without warranty of any type, expressed or implied, including but not limited to any warranty as to their performance, merchantability, or fitness for any particular purpose.

Polk County GIS
 1 in = approx. 3,155 feet



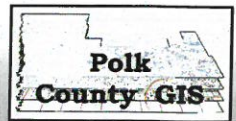
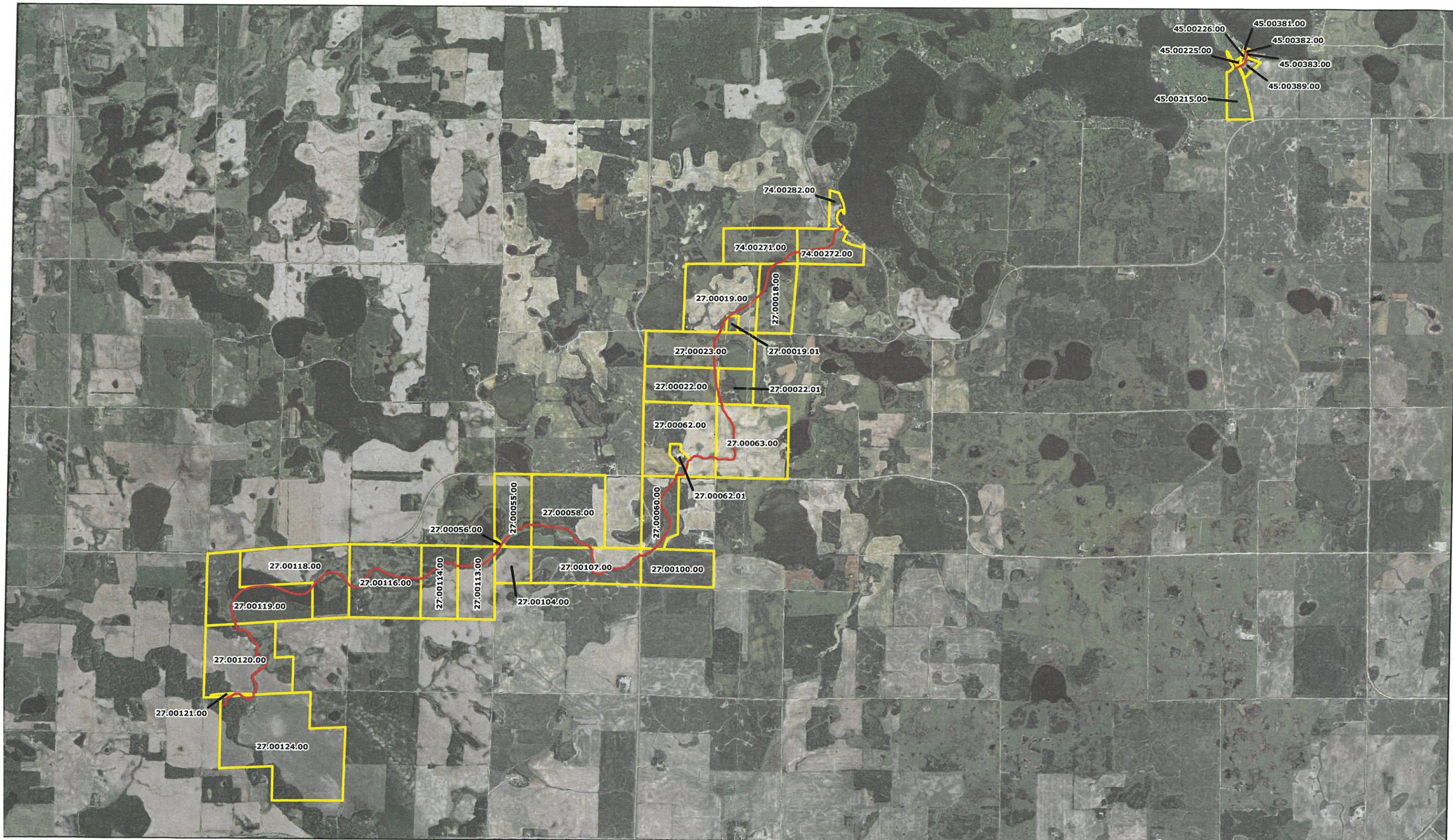
Union Lake Outlet Route
(Approximated from LIDAR Data)

— Outlet Route □ Outlet Route Parcels

These data are provided on an "AS-IS" basis, without warranty of any type, expressed or implied, including but not limited to any warranty as to their performance, merchantability, or fitness for any particular purpose.

1 in = approx. 3,155 feet

4/3/2012



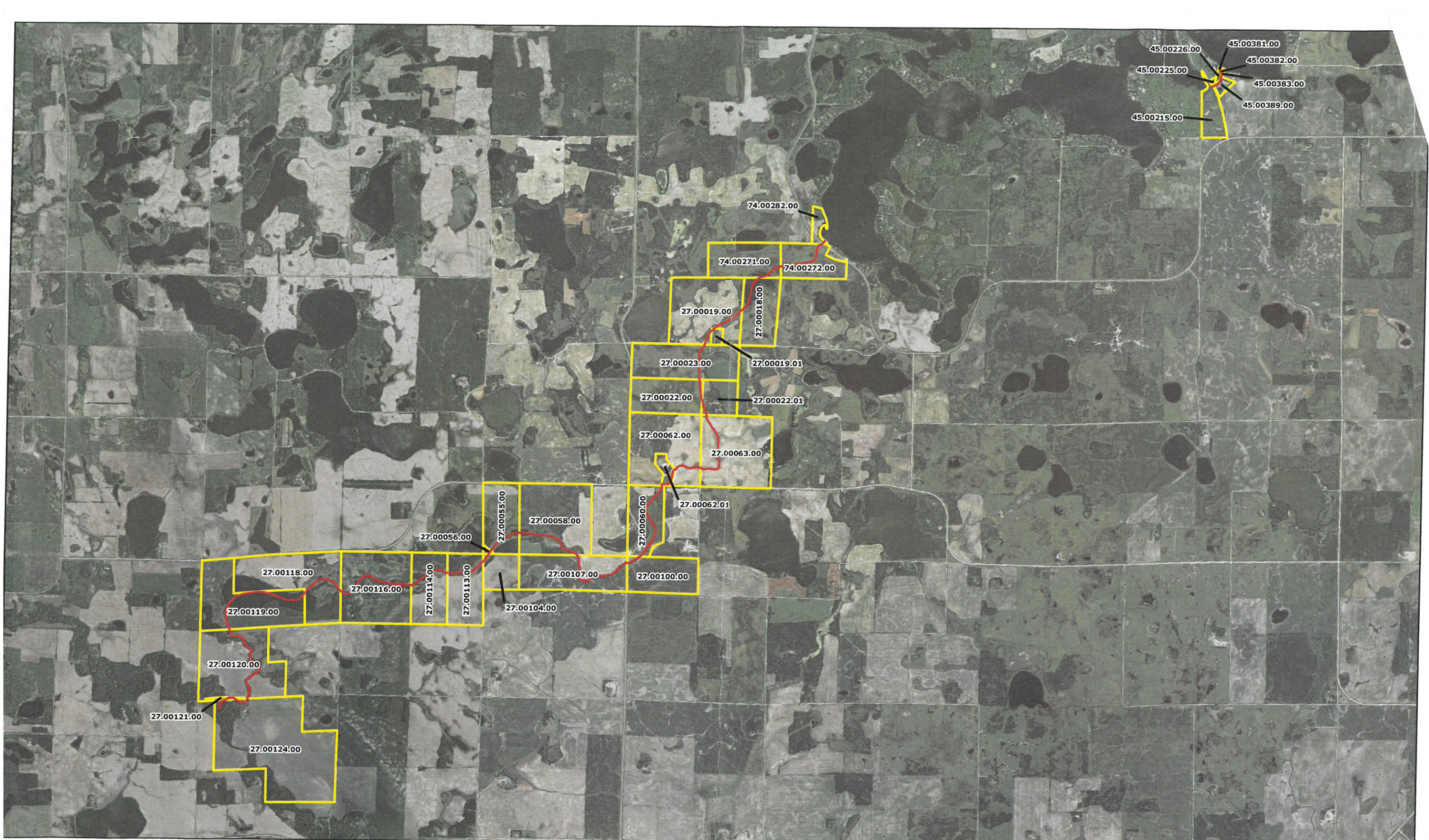
1 in = approx. 3,155 feet

Union Lake Outlet Route

(Approximated from LiDAR Data)

— Outlet Route □ Outlet Route Parcels

These data are provided on an "AS-IS" basis, without warranty of any type, expressed or implied, including but not limited to any warranty as to their performance, merchantability, or fitness for any particular purpose.



Union Lake Outlet Route

(Approximated from LIDAR Data)

— Outlet Route □ Outlet Route Parcels

These data are provided on an "AS-IS" basis, without warranty of any type, expressed or implied, including but not limited to any warranty as to their performance, merchantability, or fitness for any particular purpose.

Polk County GIS

1 in = approx. 3,155 feet